

## TECHNICAL DATA SHEET - FORMSKIVA HYDRATEC

### DESCRIPTION

The formwork panel is made from 98% recycled PVC-free plastic (polypropylene) and features continuous channels that make it lightweight, rigid, and easy to cut to the desired dimensions directly on-site. For projects requiring specific dimensions, the formwork panel can also be pre-cut to order. We process the panels at our facility according to your specifications, reducing both on-site labor and material handling.

**Important Information: The formwork panel is not self-supporting and must be backfilled before casting.**

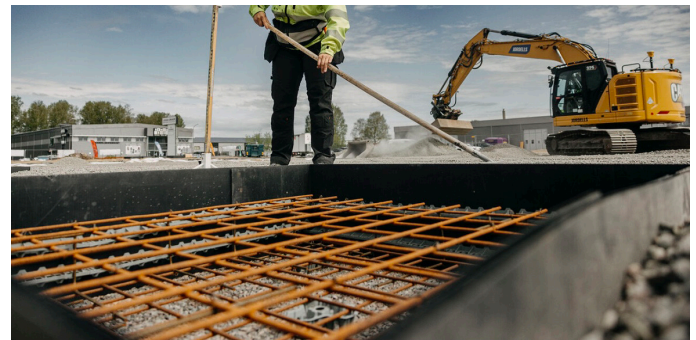
### ADVANTAGES

- Made from recycled material (98% recycled PVC-free plastic)
- PVC-free for minimal environmental impact
- Low weight per square meter, facilitating handling and installation
- Available in custom dimensions or easily adjusted on-site



### APPLICATIONS

The Hydratec formwork panel is used as stay-in-place formwork in concrete structures and is particularly suitable for quickly and efficiently creating custom-sized foundation forms directly on-site. Thanks to its continuous channels, the panel is easy to cut, fold, and adjust to achieve the required shape. The formwork panel is securely fastened using Montageskruv (installation screws) for a stable attachment.



### RANGE OF ARTICLES

Item.nr	Description	m <sup>2</sup> /pcs	m <sup>2</sup> /pallet	Channel length (mm)	Unit
1013001	Formskiva Hydratec 2400x1200MM	2,88	432	1200	Sqm
1013002	Formskiva Hydratec 3000x2400MM	7,2	612	3000	Sqm
1013011	Montageskruv 4,2x25MM FZB 1000 pcs/pkg	-	-		Pkg

### OTHER INFORMATION



BVB ID  
123797



The product is listed in the Nordic Ecolabel's Building Product Portal and is approved for use in Nordic Ecolabeled buildings.

### STORAGE

The product should be protected from prolonged exposure of direct sunlight during storage to maintain its material properties.