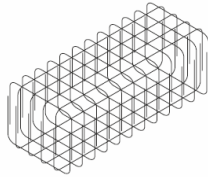


Montageanvisning - Hydra Form

Pile Cap or Base Assembly - Step by step guide

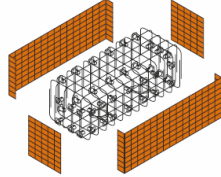
Fixing the pile caps and beams this way allows easy access to fix continuity bars through one side of the cap or base.

1
 Position pile cap cage to line and level.



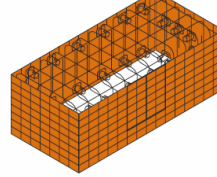
Piles cut down and area blinded.

2
 Using the Hydra form schedule sent with the load, identify the marked units for the cap and base and place against the spacers.



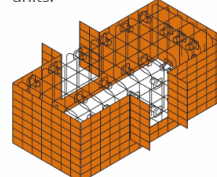
All Hydra form units marked as schedule, for simple and rapid assembly.

3
 Mark the beam outline on the side of the cap or base assembly, as drawn, ready to form openings for beams.



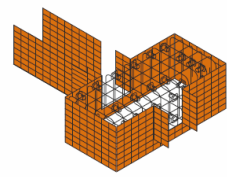
Use straight edge and marker allow additional 25mm width so beam units fit inside 'doors'.

4
 Cut down centre line and across soffit line of beam. Form 'inverted T' fold out 'doors', ready to accept the Hydra form beam units.



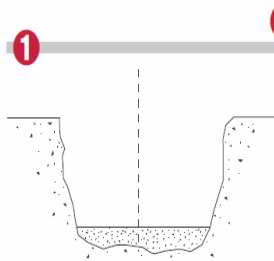
Leave top wire intact and cut alternative wires at 'door' hinge point. This helps to give a tight bend and makes the folding easier. The 'doors' act as the grout seal. Spacers may be removed at door openings.

5
 Select preformed Hydra form beam units and place inside the prepared open 'doors'. No taping or tying of joints is required.

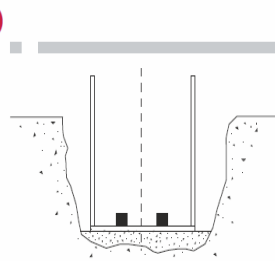


U Section Beam Installation

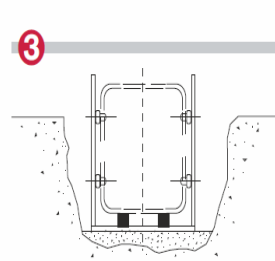
Recommended construction sequence for r.c. ground beams.



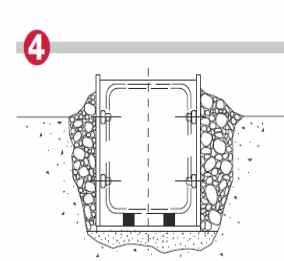
Pull trench and place concrete blinding.



Position U section Hydra form beam and place concrete bar spacers in base.



Insert beam rebar cage to line and level with fixed Hydra form plastic side spacers to reinforce cage.



Place loose backfill within 50mm of finished concrete level. Keep foot traffic and vehicles well clear of foundations under

Typical "U" Section Beam Connections

Will vary by depth of cap/base and ground conditions. Spacer centres to be adjusted as required to maintain specified concrete cover. Spacers to be staggered, as shown where practical.

