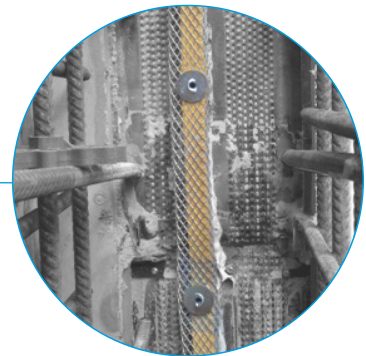


HyDra POLYBAR+

Revolutionary development for sealing construction joints



Tailor-made geometry
and expansion capacity



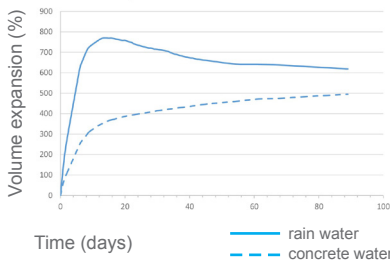
Unsusceptible
to washing out



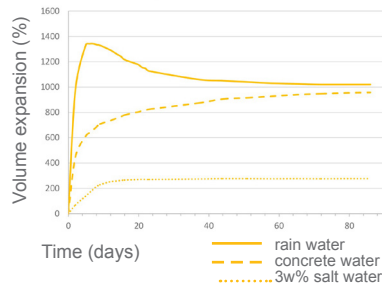
User-friendly :
lightweight and elastic

EXPANSION CAPACITY POLYBAR+

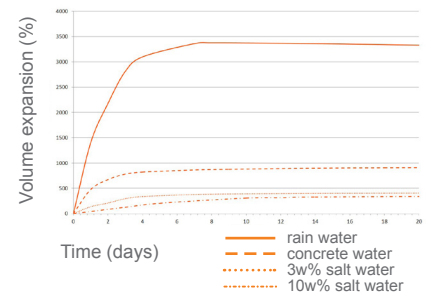
HyDra POLYBAR+ standard version 20x5 mm



HyDra POLYBAR+ salt water version 20x5 mm



HyDra POLYBAR+ superswell version 20x5 mm

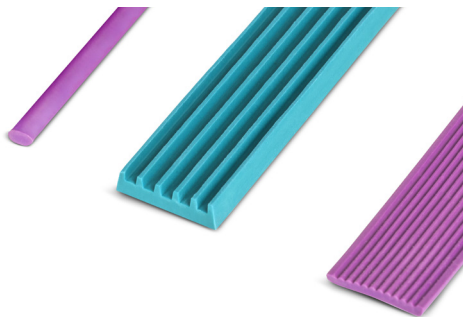


	PRODUCT NAME	BOX	PALET	SALT WATER VERSION	SUPERSWELL VERSION
	HyDra POLYBAR+ 20x5 mm	5x10 m	60x50 m = 3.000 m		
	HyDra POLYBAR+ 20x10 mm	9x10 m	24 x 90 m = 2.160 m		
	HyDra POLYBAR+ 20x20 mm	9x5 m	8 x 45 m = 360 m / 24 x 45 m = 1.080 m		
	HyDra POLYBAR+ 20x30 mm	4x5 m	18 x 20 m = 360 m / 54 x 20 = 1.080 m		
	HyDra POLYBAR+ 30x30 mm	3x5 m	24 x 15 m = 360 m		
	HyDra POLYBAR+ 50x5 mm	4x15 m	24 x 60 m = 1.440 m		
	HyDra POLYBAR+ 100x5 mm	2x15 m	24 x 30 m = 720 m		
	U JOINT 20 mm for metal waterstop	20x2,4 m	24 x 48 m = 1.152 m		
	T JOINT for PVC waterstop	20x2,4 m	24 x 48 m = 1.152 m		

HyDra Polybar+ self-expanding sealing bars are based on a thermoplastic synthetic rubber and are available in :

- a standard version (blue)
- a salt version (yellow) for salt water up to 3w%, manure and slurry
- a superswell version (orange) for use under highly saline conditions up to 10w%

TAILOR-MADE PRODUCTS



CERTIFICATES



The water swellable sealing products by BeSealed are based on the unique Active Sealing technology. Our products expand on contact with water. This is how they create an active seal to combat moisture infiltration. The products are self-correcting and thus also sealing the unevenness and imperfections of the concrete.