

## TECHNICAL DATA SHEET - HYDRA SPRUTMEMBRAN

### DESCRIPTION

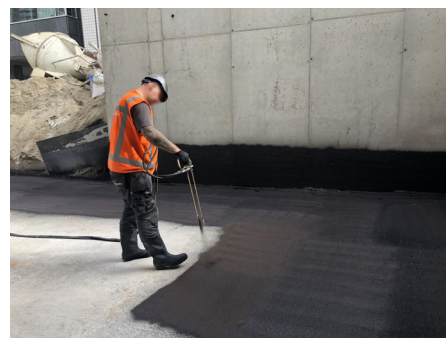
#### **HyDra Sputmembran – Sprayable, Seamless, Waterproof, and Radon-Resistant Membrane**

HyDra Spray Membrane is a cold-applied, seamless membrane with a wide range of applications. The product is waterproof and radon-resistant, providing a protective coating against water, salt, and chemical penetration.

**Applications:** Can be applied to basement walls, foundations, parking decks, hollow-core slabs, courtyard slabs, sprinkler tanks, etc.

**Corrosion protection:** Can also be used as a rust-protection. (See method statement)

**High-temperature resistance:** Withstands high temperatures and is ideal as a base layer for asphalt paving.



### APPLICATION

HyDra Sprutmembran is applied using a specialized sprayer designed for this system. The product is eco-friendly, solvent-free, and water-based, making it a safer alternative to hot-applied membranes that require an open flame on-site.

- **Seamless and flexible** – Forms a permanent water- and radon-resistant membrane.
- **VOC-free** – Contains no harmful organic pollutants.
- **User-friendly and safe** – No heat or open flame required during application.

#### **Application and surface preparation:**

For best results, the surface should be dry and free from dust, dirt, grease, and oil. For a complete guide on application and preparation, please read our method statement (Metodbeskrivning för HyDra Sprutmembran).

- Remove cement laitance and loose, deteriorating parts before application.
- Before applying HyDra Sprutmembran all joints, penetrations, cracks etc should be prepared with HyDra Rubber LM and geotextile if needed.
- Recommended coverage: 2.7 kg/m<sup>2</sup> (depending on the desired thickness).
- At 1.0 mm thickness, the membrane is airtight and vapor-proof.
- At 2.0 mm thickness, the membrane is watertight, tested up to 7,5 BAR by KIWA according to NEN-EN12390-8. At 2.0 mm the membrane is also radontight.

#### **Drying Time and Curing:**

- Touch-dry within a few minutes after application at 20°C.
- Fully cured and fully bonded to the substrate within 48 hours (depending on temperature and humidity).

#### **Application Capacity:**

600–1200m<sup>2</sup>/day under normal conditions.



### ADVISE & PRECAUTIONS

**Safety and Handling** – HyDra Sprutmembran is mildly alkaline. Follow standard safety precautions during application. Refer to the safety data sheet for more information.

**Temperature Limitation** – The product should not be applied at temperatures below 5°C.

**Frost and Weather Sensitivity** – Uncured membrane may be damaged if frozen. Do not apply to wet or frozen surfaces, or when rain is expected.

## TECHNICAL DATA SHEET - HYDRA SPRUTMEMBRAN

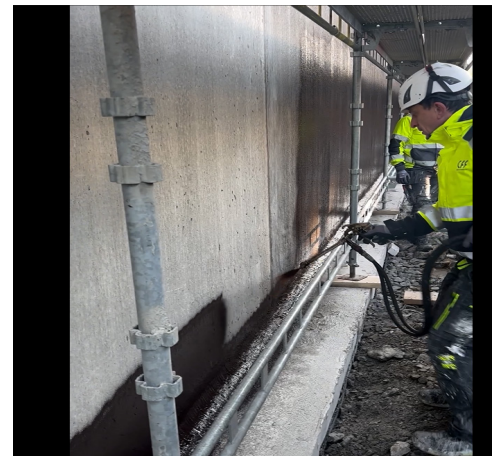
### RANGE OF ARTICLES

Item.nr	Description	Unit
1312015	HyDra Sprutmembran 200L	L
1312016	HyDra Sprutmembran 1000L	L
1312020*	Calcium chloride HyDra Sprutmembran 25KG	Pkg
1312021	Two component pump HyDra Sprutmembran	St
1312022	Spraygun HyDra Sprutmembran	St
1312023	Nozzle set HyDra Sprutmembran (3 st/frp)	St
1312024	Renovation kit Two component pump	St
1312025	Renovation kit spraygun	St
1312026	Extra hose for two component pump	M

\*=1 bag (25kg) is used for 1000 liter sprutmembran



Two component pump HyDra Sprutmembran



### OTHER INFORMATION



BVB ID  
174584

This product is listed in the Nordic Swan Ecolabel's Building Product Portal and is therefore approved for use in Swan-labeled buildings.

### STORAGE

#### Fire and Transport Classification:

The product is non-flammable and requires no special precautions for transport or storage.

#### Storage Requirements:

Do not store at temperatures below +5°C. Keep in the original container with a tightly sealed lid when not in use to prevent surface foaming.

#### Safety:

Keep out of reach of children.

#### Further Information:

Refer to the safety data sheet for more detailed information. Current safety data sheet can be found on our webpage [www.hydratec.se](http://www.hydratec.se)

## TECHNICAL DATA SHEET - HYDRA SPRUTMEMBRAN

### TECHNICAL INFORMATION

#### PHYSICAL PROPERTIES (UNCURED)

DESCRIPTION	VALUE
Color	Brown/black
Specific gravity (liquid), g/cm <sup>3</sup>	Approx. 1.0
Odor	None
Volatile organic compounds (VOC) - solid content	Contains no solvents
Solid content %	53-58%
Viscosity Brookfield CPS	1-100
pH	10-12

#### CURED MEMBRANE

mm	kg/m <sup>2</sup>	
1.00	1.35	Airtight
2.00	2.7	Waterproof & radon-resistant 7.5 BAR

#### PERFORMANCE (CURED)

DESCRIPTION	RESULT
Color	Black
Specific gravity g/cm <sup>3</sup>	Approx. 1.0
Water absorption NEN-EN-ISO 15148:2002	0.00011kg/m <sup>2</sup> .sec <sup>0.5</sup>
Water vapor transmission NEN-EN-ISO 7783:2011 Crack	0.59 g/m <sup>2</sup> *24h
Crack bridging ASTM C1305	Approved
Adhesion to limestone	2,1 n/mm <sup>2</sup>
Adhesion to PVC	1,4 n/mm <sup>2</sup>
Adhesion to steel	1,9 n/mm <sup>2</sup>
Adhesion to aluminum	2,7 n/mm <sup>2</sup>
Adhesion to concrete	2,07 n/mm <sup>2</sup>
Adhesion to wood	2,9 n/mm <sup>2</sup>
Tensile strength ASTM D638	Passed (>90% original value)
Elongation % ASTM D638	850%
Recovery %	>90%
Salt resistance ASTM B117-09	Passed >1200h
Air permeability ASTM E2178	0.0004 L/(s.m <sup>2</sup> ) at 75 Pa



Declaration of performance  
Construction products  
regulation (CPR)  
EU 305/2011

We reserve the right for typographical errors and refer to the fact that the current version of the information is always available at [www.hydratec.se](http://www.hydratec.se) or can be requested by contacting our office. The current version number can be found in the upper left corner

**Hydratec Scandinavia AB | [info@hydratec.se](mailto:info@hydratec.se) | Tel: +4610-585 21 00 | [www.hydratec.se](http://www.hydratec.se) | Hallsberg, Sweden**