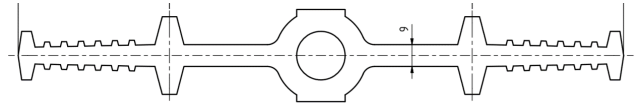
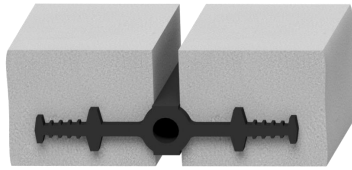


Waterstop HyDra Elastomer FM



PRODUCT SPECIFICATION

HyDra Elastomer expansion waterstop series FM according to DIN 7865, part 1 and 2, is a permanently flexible sealing profile with middle tube made of elastomer, SBR or EPDM, that is used to seal expansion joints in waterproof concrete structures with high water pressures.

Characteristics / Advantages

- high tensile strength and elongation at break
- high permanent flexibility and high-load bearing capacity
- suitable for water pressure and large settlements
- resistant to all natural media acting aggressively to concrete
- resistant to a wide range of chemical substances (tests required for each additional specific situation)
- resistant to bitumen
- supply of systems for easy handling on site
- vulcanizable by using butt joints on site

Application

- joint sealing in concrete structures
- expansion joint sealing system for in-situ concrete
- press joints according to ZTV-ING

Typical structures

- bridges, trough and bridge constructions
- rail tunnels and road tunnels
- water construction plants

Waterstop HyDra Elastomer FM



Standards / Directives

- DIN 18197
- DIN 7865, part 2
- WU-Directives DAfStb
- ZTV-ING, Riz-Ing
- Vulcanizing instructions

Test certificate / Approvals

- latest manufacturer's test certificate
- certificate of conformity – DIN 7865
- external monitoring by MPA NRW
- internal monitoring

PRODUCT DATA

Material

- SBR elastomer (styrene butadiene rubber)
- EPDM elastomer (ethylene-propylene-diene monomer)

Colour

- black

Packaging

- supplied as standard rolls (25 m)

Waterstop HyDra Elastomer FM



MECHANICAL PROPERTIES according to DIN 7865, part 2

Shore A hardness	62 ± 5
-------------------------	------------

Tear strength	$\geq 10 \text{ MPa}$
----------------------	-----------------------

Elongation at break	$\geq 380 \%$
----------------------------	---------------

Compression set	168h / 23°C $\leq 20\%$ 24h / 70°C $\leq 35\%$
------------------------	---

Tear propagation resistance	$\geq 8 \text{ kN/m}$
------------------------------------	-----------------------

Performance after heat ageing	Shore A hardness change ≤ 8 Tear strength $\geq 9 \text{ MPa}$ Elongation at break $\geq 300\%$
--------------------------------------	--

Low temperature performance	$\leq 90 \text{ Shore A}$
------------------------------------	---------------------------

Tension set	$\leq 20\%$
--------------------	-------------

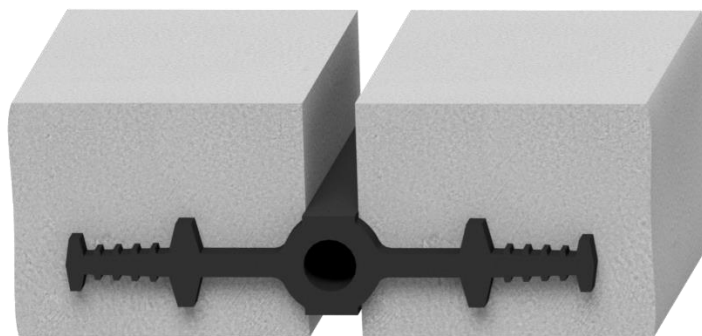
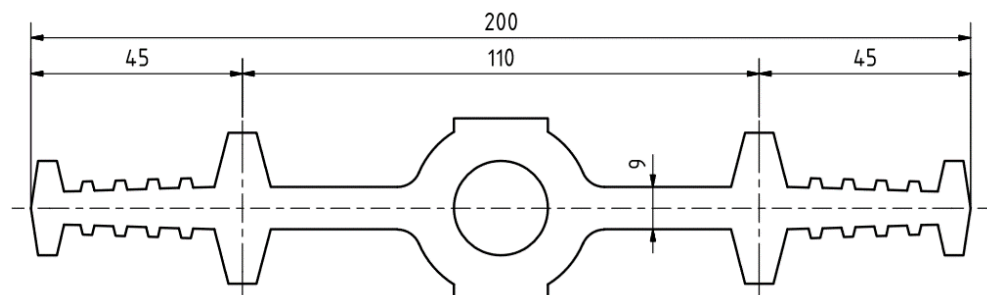
Performance after conditioning in hot bitumen	Residual deformation $< 20\%$ Tear strength $\geq 7 \text{ MPa}$ Elongation at break $\geq 300\%$
--	---

Performance after ozone ageing	No cracks
---------------------------------------	-----------

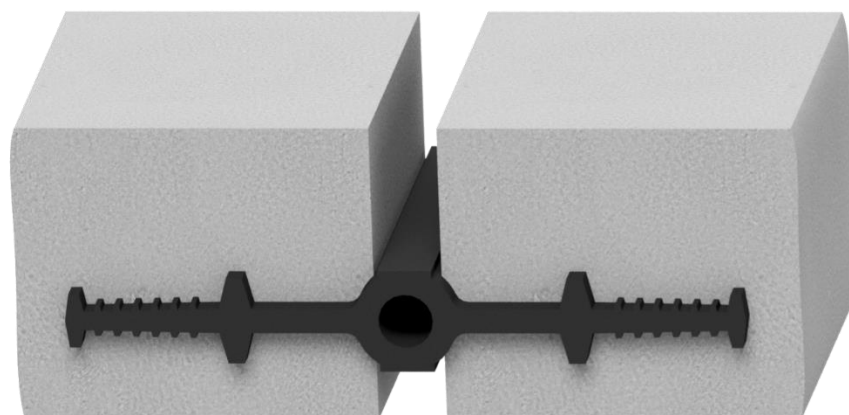
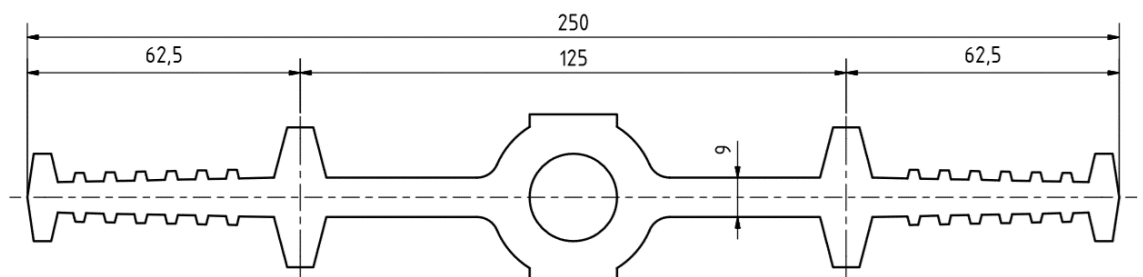
Waterstop HyDra Elastomer FM



FM 200



FM 250

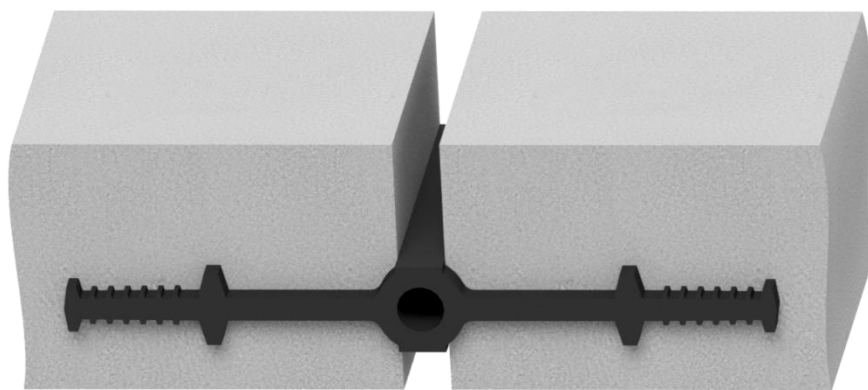
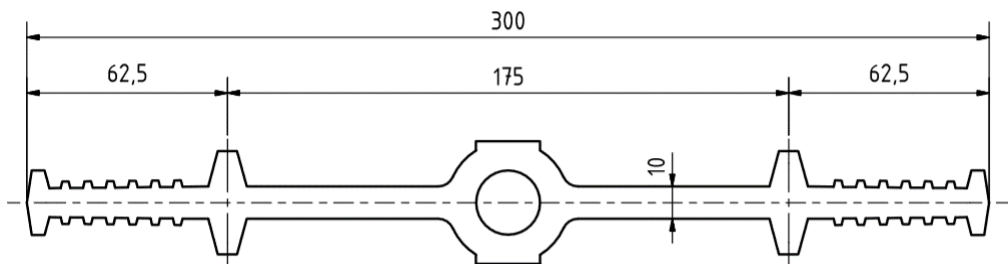


All dimensions in mm

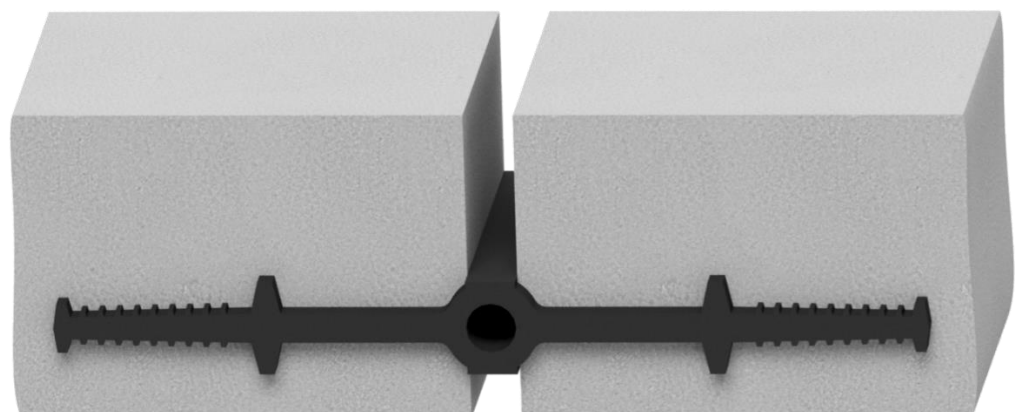
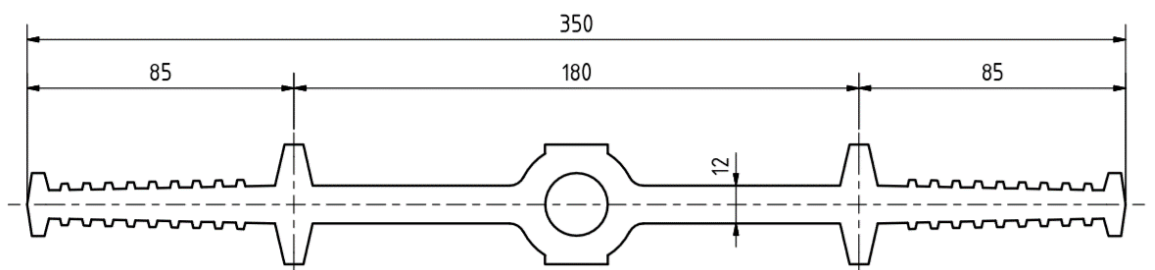
Waterstop HyDra Elastomer FM



FM 300



FM 350

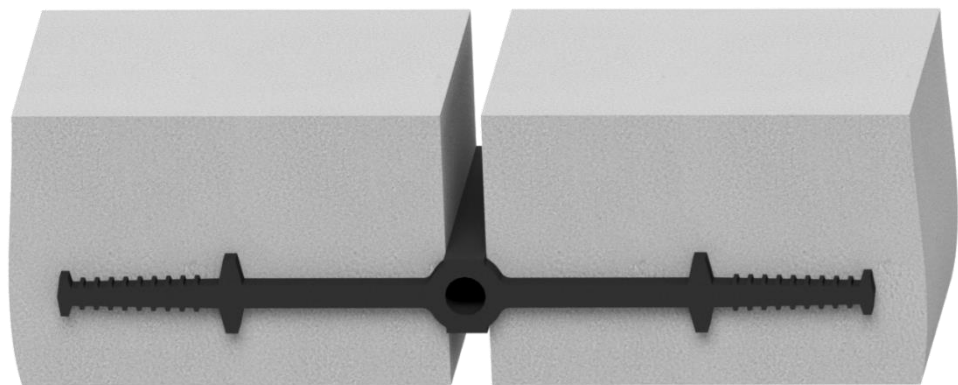
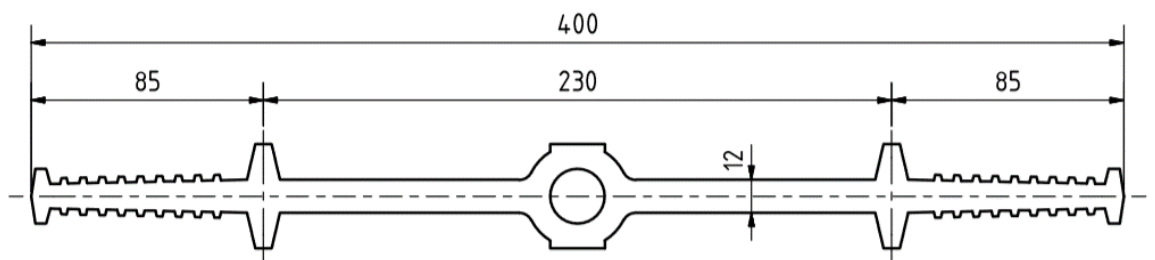


All dimensions in mm

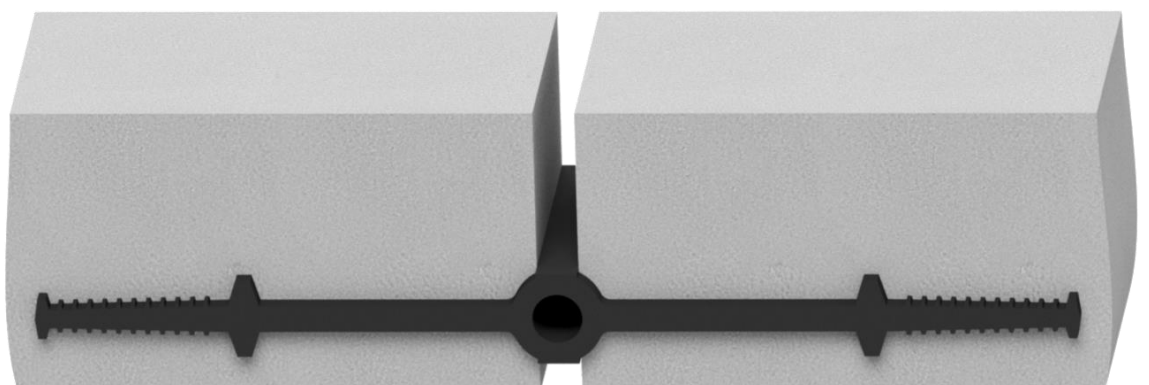
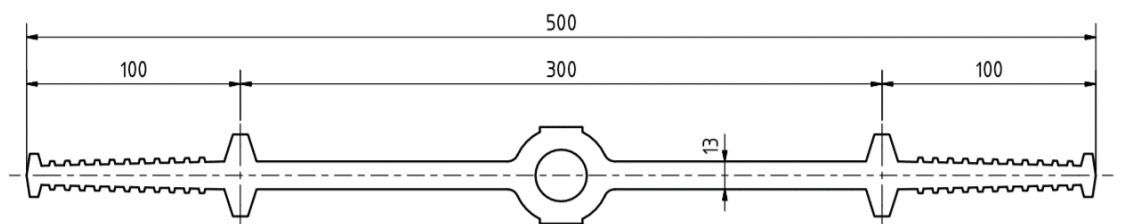
Waterstop HyDra Elastomer FM



FM 400



FM 500



All dimensions in mm